

MONTHLY MEMBERSHIP PROGRESS REPORT

LOCATION SOUTH DAKOTA

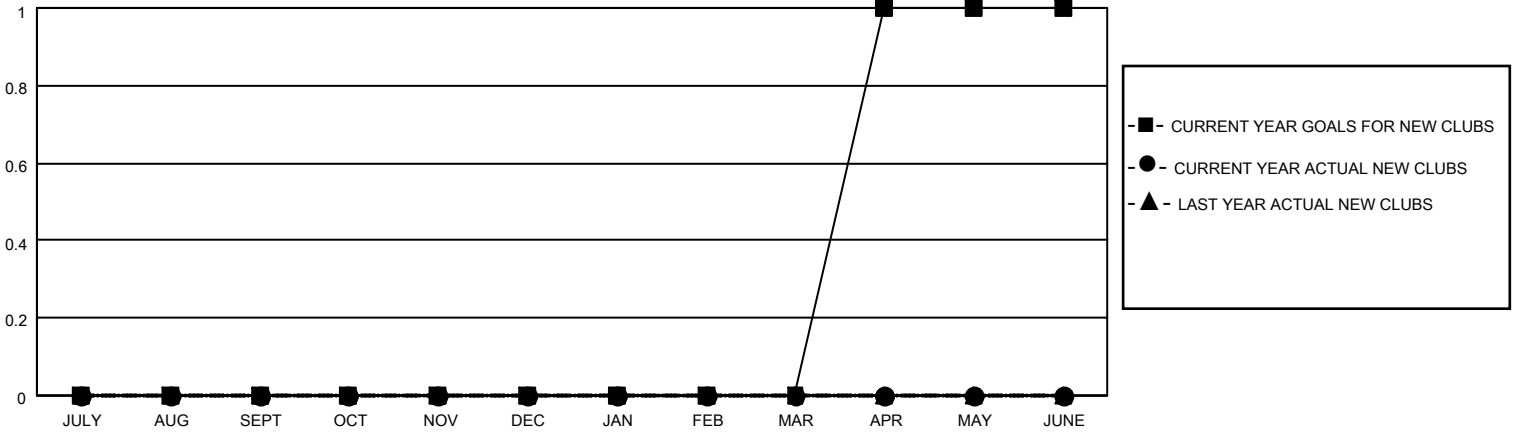
District 5 SW

Results as of: 1/31/2021

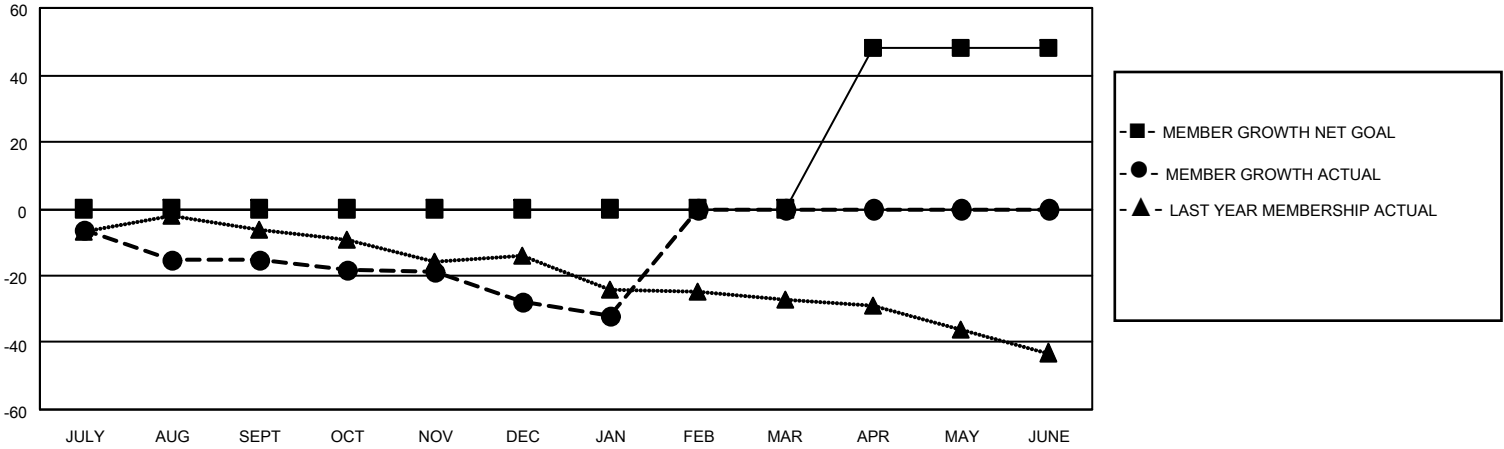
Clubs			
RESULTS FOR 2020-2021			
QUARTER	NEW CLUB GOAL	NEW CLUBS	DROPPED CLUBS
JULY/AUG/SEPT	0	0	0
OCT/NOV/DEC	0	0	0
JAN/FEB/MAR	0	0	0
APR/MAY/JUNE	1	0	0

Members			
RESULTS FOR 2020-2021			
QUARTER	MEMBER GROWTH NET GOAL	MEMBER GROWTH ACTUAL	DROPPED MEMBERS ACTUAL (including transfers)
JULY/AUG/SEPT	0	2	17
OCT/NOV/DEC	0	17	29
JAN/FEB/MAR	0	0	4
APR/MAY/JUNE	48	0	0

GOALS AND ACTUAL NEW CLUBS CUMULATIVE



GOALS AND ACTUAL MEMBERS CUMULATIVE



DROPPED CLUBS: 0	8 CLUBS OF 33 ADDED 1 OR MORE NEW MEMBERS	<u>GENDER DISTRIBUTION</u> MALE 508 (72.99%) FEMALE 188 (27.01%)
<u>DROPPED MEMBERS</u> DECEASED 9 CLUB CANCELLED 0 OTHER 41 <hr/> TOTAL 50	CLICK HERE FOR CUMULATIVE MEMBERSHIP DATA	TOTAL FAMILY UNIT MEMBERS 110 FAMILY MEMBERS PAYING HALF DUES 56